

Lawyers On Stage Theatre Society
presents

Treasure Island

by
Bryony Lavery

based on the novel by
Robert Louis Stevenson

directed by
Kate Rubin

**Langham
Court
Theatre**

December 6th, 7th, 8th
show at 8pm

December 9th
matinee at 2pm

recommended for ages 11 and up

Adult \$30 Senior \$25 Student \$15

Box Office 805 Langham Court

Mon-Fri 12-4pm | 250-384-2142

langhamtheatre.ca/buytickets

Proceeds from this event go to:

TLC: Fund for Kids and the Victoria Sexual Assault Centre



TREASURE ISLAND in this adaptation was first performed on the Olivier stage of the National Theatre, London, on 3 December 2014

LAWYERS ON STAGE THEATRE SOCIETY

presents

Treasure Island

by Bryony Lavery

(Based on the novel by Robert Louis Stevenson)

Presented by special arrangement with Dramatists Play Service, Inc., New York

Director	Kate Rubin
Producers	Susan Leslie, Andrew Pirie
Show Design	Carole Klemm
Stage Manager	Sadie Fox
Assistant Stage Managers	Mya Blaus, Tess Wiens
Lighting Design	Karrie Wolfe
Sound Design	Ivan Elieff
Costume Co-Ordinator/ Assistant Costume Design	Hana Ruzesky-Bashford
Head Scenic Carpenter	Chris Clarke
Makeup Artist	Adrienne Jenkins
Technician	Susan Leslie

Cast

(In order of appearance)

Katie Webber	Jim Hawkins
Sarah Ramshaw	Grandma
Marcela Lagos	Mrs. Crossley, Captain Flint the Parrot
Liam McGuigan	Job Anderson, Ben Gunn
Fiona Donnelly-Rheaume	Red Ruth
Ruari McLennan	Squire Trelawney
Gillian Calder	Dr. Livesey
Phil Duchene	Bill Bones, Lucky Micky
Ian Bruce	Black Dog
Andrew Pirie	Blind Pew, Grey
Bruce Murray	Killigrew the Kind
Irene McGee	Silent Sue
Cailey Harris	Joan the Goat
Renata Colwell	Dick the Dandy
Marina Goodwin	Israel Hands
Jim Legh	George Badger
Glenn Grande	Captain Smollett
*Christopher Mackie	Long John Silver

* The participation of this Artist is arranged by permission of Canadian Actors' Equity Association under the provisions of the Dance•Opera•Theatre Policy.

SETTING

The story begins in the Admiral Benbow Inn, Black Hill Cove, Southwest England
“Above us all the stars of the Northern Hemisphere in the incredible darkness of 18th century England.”

Act 1

From the Benbow Inn to Bristol and on the Hispaniola to Treasure Island
“We must not breathe a word of what we’ve found”

Intermission with refreshments and Silent Auction/Treasure in the Lounge

Act 2

On Treasure Island
“The Island of Billy Bones’ horrors, shaped and smelling like a dead man’s corpse.”

Reception in Lounge after the show/silent auction results/cast and crew in person

A Message from LOST

Avast ye landlubbers!! Thank you for coming!

LOST is pleased to present its 2018 production-Treasure Island, adapted by Bryony Lavery, and directed by Kate Rubin. Proceeds from the show including the silent auction and donations go to support those in need in our community. Thank you for your generosity.

The search for treasure is a timeless concept. Lavery’s feminist adaptation of Treasure Island raises surprisingly touching and telling messages for young and old alike. In Lavery’s own words, “Treasure Island is about learning the hard, perilous way, about who and what to trust. Jim is each of us, girl or boy, grandma or grandad... leaving our safe, humdrum, drudgery-filled lives to board ship, to sail the seas to find treasure.”

Many thanks to Langham Court Theatre for allowing us lawyers into their building once again during their remarkable 90th Anniversary Season. Langham Court Theatre is the longest running community theatre in Western Canada. Please consider a Langham membership, subscribing to their 90th season of theatre, or get involved in supporting this creative enterprise.

Enjoy the adventure about to unfold.

We hope to see you next year. Our 2019 Show Announcement will be coming soon.

Happy Holidays from the LOST Board

Andrew Atkins, Albert Berns, Colleen Cattell QC, Phil Duchene, Debbie Harris,
Lauren Jerke, Susan Leslie, Andrew Pirie, Sara Ramshaw

Acknowledgements

The Belfry Theatre, Adrienne Smook from Glen Lyon Norfolk School, Canadian College of the Performing Arts, Greater Victoria Shakespeare Festival, Mike Black of Capitol Iron, Disguise The Limit, Cast and crew (for their lending and donation of costumes and props)

About the Playwright

Bryony Lavery is a British dramatist and a Fellow of The Royal Society of Literature. Having begun her career as an actress, she decided that she was fed up with playing poor parts in plays, such as the left arm of a sofa, and decided to write plays with better parts for women.

Her plays have a feminist undertone to them including her successful and award-winning 1998 play *Frozen* and her adaptation of *Treasure Island* which was first performed on the Olivier Stage of the National Theatre, London, on 3 December 2014. Early in her career she founded a theatre company called Les Oeufs Malades. She also founded Female Trouble, More Female Trouble and served as artistic director of Gay Sweatshop. Lavery also is credited with pioneering work on gender-blind casting.

About *Treasure Island*, Lavery says “*Treasure Island* is the most ripping of ripping yarns. I think it is terrifying because it delivers, imaginatively, that moment in life when, if we were lucky enough to have safe childhood homes, dangerous human beings started to enter our lives. Suddenly they appear on the outer perimeter of our collective consciousness and, like the Black Spot, we know it is a warning from the dark dangerous world out there.”

Directors Note

It has been a treat to direct *Treasure Island* for LOST this winter and watch lawyers, and professors don swords, tattoos and attitude to play in a swashbuckling adventure.

I loved this story when I was young. Long John Silver, Billy Bones, Blind Pew, the parrot, are all memorable characters. The only sticking point for me, was that they were all men except for the mother (who stayed at home.)

But I could relate to Jim. In the 1970's I wanted to go on adventures and at that time, it was still unusual for a girl to head off into parts unknown. I travelled in Europe and Africa when I was 18 and few women of my generation, had many examples to draw from. We were an anomaly and had to explain or protect ourselves a lot. Thankfully since then much has shifted, but there are places where a woman attempting to 'captain' and navigate her own ship is still a challenge. So, we keep looking to change the landscape, re-write the story, and attempt to find some kind of balance.

Bryony Lavery has adapted this classic Robert Louis Stevenson story, keeping many of the wonderful characters and underlying drama alive and added the notion that as Dr. Livesay says “Girls need adventures too.” She has made the young protagonist Jim, into Jimima, a village girl who longs for experience out in the big wide world. When I researched this period, I discovered that indeed there were woman pirates and there were women that went along on the ships. But in some cases, women, side stepped societal roadblocks by masking their gender and the playwright has Dr. Livesay and some of the pirates disguised as men.

Lavery has written this play so that performers and audience members of all gender identifications can engage in a world and a story, where there is the thrill of crossing an ocean, battling the elements, risking death and finally to discover treasure; whatever that might be.

We hope you enjoy the journey and head home to as Ben Gunn says “... a safe warm place ... with some good humans and real cheese.”

Kate Rubin

Production Biographies

Kate Rubin



Director

Kate has worked professionally as a performer, director, theatre educator and coach for many theatre companies and organizations throughout Victoria including The Belfry, Greater Victoria Shakespeare Festival and William Head on Stage. She recently directed *The Crossroads: A Prison Cabaret*. This is her second play with Lawyers on Stage, having directed *The Snow Queen* in 2017. She has enjoyed the experience immensely and is so appreciative of the hard work, creative input and sense of fun that the team has brought to this production.

Carole Klemm



Show Design

Carole's recent work includes designs for last season's production of *The Snow Queen*, *The Crossroads* for William Head on Stage, *The Tempest* and *Pericles* for the Victoria Shakespeare Festival and *Taking Off* for The Belfry Theatre. She has designed and painted for the Royal Manitoba Theatre Centre, the Belfry Theatre, Theatre SKAM, Pacific Opera Victoria, Chemainus Theatre Festival, Blue Bridge Theatre, Kaleidoscope Theatre, Prairie Theatre exchange, Western Canada Theatre Company, Studio 58 Langara College and others.

Sadie Fox



Stage Manager

A graduate of the Canadian College of Performing Arts, Sadie Fox has been working professionally as a Stage Manager for the past three years. Most recently, Sadie spent half her summer at Caravan Farm Theatre (*Law of the Land*) and spring at The Belfry Theatre (*Salt Baby*), both as Assistant Stage Manager. Other Belfry favourites include: *The Children's Republic*, *Gracie*, and *A Christmas Carol*. She also paints things, sings sometimes, and will teach you how to recycle.

Karrie Wolfe

Lighting Designer

Ivan Elieff

Sound Designer

Hana Ruzesky-Bashford

Costume Co-Ordinator



Hana is a recent graduate of the Phoenix Theatre program at UVic. She was the costume co-ordinator for last year's LOST production of *The Snow Queen* and is excited to be back again this year for *Treasure Island*. Recent costume credits include: *Sense and Sensibility* (Langham Court Theatre), *Project Mercury* (Vino Buono) and *The Inspector* (Phoenix Theatre).

Mya Blaus

Assistant Stage Manager



Mya is a high school student at Spectrum Community school. She is a singing, dancing, managing triple threat. She is the ASM for LOST's production of *Treasure Island*. When she's not with LOST she is with her school's production of *Young Frankenstein*. She has been very happy to work with such a rewarding and amazing cast and for such an extraordinary cause. She hopes you enjoy as this was truly amazing to work on.

Tess Wiens

Assistant Stage Manager



Tess has worked in theatre since the age of seven. She has worked on stage as an actor, and backstage doing everything from stage hand to sound design. Tess is new to the Victoria theatre community and has just started helping at Langham Court Theatre. Working as a tech for 16 years, she hopes to be a good addition to Victoria theater.

Cast Biographies

Katie Webber

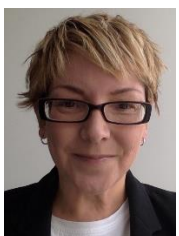
Jim Hawkins



Katie is currently with the Office of the Ombudsperson, although she will reprise her role as a lawyer with the Ministry of Attorney General in mid-December. This is Katie's second year striking gold (for charity!) with LOST. Previously, she performed with McGill Law's *Actus Reus* theatre group. Although Katie is an avid rock climber, *Treasure Island* features her first ascent of a big pimple.

Sarah Ramshaw

Grandma



Sara is an Associate Professor at UVic's Faculty of Law and on the Board of Directors of LOST. She has performed with Canada Ice Dance Theatre and the Lennox and Addington Theatre Guild. She was "Ruth" in David Mamet's *The Woods* (Toronto); "Katharina" in Shakespeare's *Taming of the Shrew* (Hamilton Urban Theatre); and "mother" in Chris Watson's *Imamalie* (Staircase Theatre, Hamilton). Last year, she was one of the ASMs on the LOST production of *The Snow Queen*.

Marcela Lagos



Mrs. Crossley, Captain Flint the Parrot

After joining the BC Public Service in 2016, Marcela became involved with LOST in the 2017 production of *The Snow Queen*. She has subsequently appeared in three musical productions by Starry Starry Skies in 2018, performing selections from *Mamma Mia*, *Hairspray*, *Sweeney Todd*, *Dracula*, and *Beauty and the Beast*. LOST now provides a new challenge for Marcela as she tackles becoming a different species. She hopes to do justice to parrots around the world with her performance.

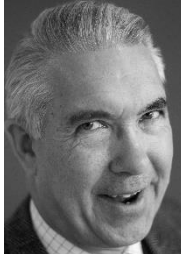
Phil Duchene



Bill Bones, Lucky Micky

Phil is a life-long teacher, LOST board member and a UVic Drama instructor in the Teacher Education Program. He is proud to be part of this happy voyage. He can claim to have dived Caribbean shipwrecks and actually owns a piece of eight. He is also a notoriously poor sailor, though Doctor Livesey would not be his first choice for family physician. In true pirate style, he enjoys grog with family and friends.

Ruari McLennan



Squire Trelawney

Ruari returns to LOST some years after appearing in shows such as *Murder on the Nile*, and *The Man Who Came to Dinner*. His current passion is playing amateur fiddle by ear, which he says is not the passion of his family, who have heard him practice. In his off-stage hours, Ruari is in-house counsel at ICBC.

Gillian Calder



Dr. Livesey

Gillian is currently Associate Dean, Students at UVic Law. Gillian comes to *Treasure Island* with a firm belief that empathy, creativity and imagination are three of the most important legal skills, and that performativity is the best form of training. She loves the gender dimensions of Bryony Lavery's adaptation, and is thrilled to work with Kate Rubin, and the talented cast and crew. Special thanks to Glenn for bannock, team front office for support and Uumati, as always, for inspiration.

Ian Bruce



Black Dog

Ian is thrilled to return to Langham a year after his LOST debut in *The Snow Queen*. Black Dog seems an apt fit for his growl, bark and at times feral disposition! Ian has graced the stage in many productions in the great theatre towns of Tofino and Sidney. He is married to Susan Leslie, a veteran legislative drafter. Thanks to the whole production team and Langham-a great cast, a historic tale, a storied venue.

Andrew Pirie



Blind Pew, Grey

Andrew is pushed and pulled (literally) playing two complicated characters alongside a very talented cast and crew. Favourite onstage appearances include the magician (*The Snow Queen*), and detectives with attitude (*Mating Dance of the Werewolf*, Theatre Inconnu, and *Escape from Happiness*, Langham Court.) Andrew also was fortunate to do several shows with LOST in the early years including the first, *Twelve Angry Men*. Off stage, Andrew is a Professor Emeritus in the UVic Faculty of Law.

Irene McGee



Silent Sue

Irene is a third-year law student at the University of Victoria. Her theatre experience is entirely limited to three productions of *The Wizard of Oz* before the age of 10, and 2 high school musicals - not to be confused with "High School Musical 2". She is excited to be joining the LOST team, and is particularly excited not to be a munchkin.

Fiona Donnelly-Rheaume



Red Ruth

Fiona is excited to make her debut with Lawyers on Stage Theatre as Red Ruth. As a UVIC Applied Theatre student, Fiona has assisted the UVIC Law Faculty acting in mock trial and client consultations. It continues to be a highlight of her undergraduate studies. Previous favourite stage roles include "Miss Andrew" in *Mary Poppins*, 'Miss Prism' in *The Importance of Being Ernest*, Nikko 'in *The Wizard of Oz*, 'Elsa 'in *The Sound of Music* and 'Edith' in *The Pirates of Penzance*.

Cailey Harris



Joan the Goat

Cailey is extremely excited to be returning to the stage with this year's LOST production of *Treasure Island*. This is her third appearance with LOST having acted in *Scrambled Feet* (2007) and *The Snow Queen* (2017). She is currently finishing her last year of her Master's degree at the University of Victoria in Applied Theatre- theatre for social change and education. As both of her parents are lawyers, she is happy to be working creatively with Victoria's legal community.

Renata Colwell



Dick the Dandy

Renata holds a JD from UVic Law, and is delighted to be making her west coast stage debut as Dick the Dandy. A former high school drama major, she stepped away from theatre during law school, and is grateful to LOST for pulling her back in. Favourite past roles include Cecily (*The Importance of Being Earnest*), Jasperino (*The Changeling*), and stage-managing Shakespeare in the Park. Renata is currently clerking at the BCSC and intends to practice Aboriginal Law.

Bruce Murray



Killigrew the Kind

Bruce is a carpenter and educator whose partner is a lawyer. This is Bruce's first attempt at amateur theatre since high school. Bruce answered the casting call for a pirate crew because, apparently, they were having trouble finding low scurvy blackguards within the legal community.

Marina Goodwin



Israel Hands

Marina's last foray into acting was as Mrs. Potts in a high school production of *Beauty and the Beast*, and she is thrilled to be on stage again with such a talented group of people. A third-year law student, Marina will be articling in Victoria next year. Gracias al equipo de LOST por esta maravillosa introducción a la comunidad jurídico de Victoria!

Jim Legh



George Badger

James is a partner at Stevenson Luchies & Legh and is seen occasionally on the LOST stage. Past performances outside of court have included a Centurion, vampire, headless body, and transvestite. He is happy to have now reached something a little closer to home as a pirate.

Liam McGuigan**Job Anderson, Ben Gunn**

Liam is a UVic Law student in his second year of studies. In high school he was a theatre kid. Liam performed in several plays, and musicals, and spent all the money he made at after school jobs on trips to Vancouver to audition for film and TV. In subsequent years he started writing and performing spoken word poetry and was involved in Langham Court Theatre's production of *Picnic*, and Theatre West Van's production of *A Murder is Announced*.

Glenn Grande**Captain Smollett**

Since stunning his fourth-grade teacher with a hand puppet tribute to Alice Cooper's "School's Out", through myriad performances – some prominent, most innumerate - Glenn is honoured to be invited back to the LOST Company. Glenn holds a JD from UBC and enjoys championing Indigenous rights and self-governance as the head of Fair Mining Collaborative. He dedicates his performance to all his relations, and to courageous 'tomboys' everywhere, especially ones with a flair for pink.

***Christopher Mackie****Long John Silver**

Christopher makes his first appearance at Langham Court Theatre with this production of *Treasure Island*. As a fight director, he has taught at the Canadian College of Performing Arts and at the Victoria Academy of Dramatic Arts. On stage, Christopher will next appear as an actor with Theatre SKAM in *Seventy Seven*. In film, his next role is in the upcoming indie comedy, *Open For Submissions*, shot here in Victoria.



The Shanty Band is pleased to be playing for working men and women at the Benbow Inn Dec 5-9. Musicians Glenn Grande, Bruce Murray, Ruari McLennan, and Irene McGee also have played extensively on ships plying the Atlantic and Caribbean Oceans with tunes that can keep you working strong through gales and hurricanes. Catch them next at The Wight Mouse Inn.

The History of LOST

The history of Lawyers on Stage Theatre (LOST) is best told when LOST friends and colleagues assemble for an evening of theatre and community, perhaps at LOST's annual theatrical fundraiser. For it is through these connections between law, theatre, and the community that LOST was found, so to speak!



In 1996, Michael Hutchison, Diane Turner, Steve Kelleher, Judge Michael Hubbard and eight other members from the Victoria legal profession bravely went on stage and played the jury deliberating about the life or death of a young immigrant man accused of first-degree murder in *Twelve Angry Men*. It was a fundraiser for Kaleidoscope Theatre. The goals-to strengthen our communities by raising resources for those in need, to give opportunity for the generous and giving side of the legal profession, to raise new understandings and education about lawyers, law, and justice, and to give those in the legal community an opportunity to express their creative self.

Then with a name, an ambiguous acronym LOST, and a stylish logo, Lawyers on Stage Theatre regaled, surprised, disappointed, wowed, and provoked audiences for over ten years. Remember back if you were there and the LOST alumni who played these shows.

Breaker Morant (1997) *Tom Jones* (1999), *Romulus the Great* (2001), *Escape from the 60s* Dinner Theatre (2002), *Murder on the Nile* (2003), *The Man Who Came to Dinner* (2004), *Everything I Really Need to Know, I Learned in Kindergarten* (2005), *I Love You, You're Perfect, Now Change!* (2006), *Scrambled Feet* (2007,) *Working* (2008), and more.

LOST then went cocoon-like for a few years although the core of the LOST alumni and the concept of lawyers giving back to their community on stage did not disappear.

In 2017, with the support of Stephenson, Luchies & Legh and the Victoria Bar Association, and the hard work of a lot of people, LOST went from a dispersed collection of theatre aficionados in law to a registered Society, Lawyers on Stage Theatre Society, with a 9 person board made up of both dedicated theatre and legal professionals to emphasize the collaborative nature of the enterprise.

In December 2017, LOST in its new form presented *The Snow Queen* at Langham Court Theatre. Directed by Kate Rubin and designed by Carole Klemm, Stuart Patterson's adaptation of Hans Christian Andersen's 1844 tale was well received. And, even though a fairy tale, the play had some remarkably timely messages about courage and standing up to an existential threat to the world, perseverance, friendship, corruption, and not unimportantly, the fragility of the environment.

LOST returns in 2018 with Bryony Lavery's *Treasure Island*, based on the adventure novel by Robert Louis Stevenson with a twist. Directed and designed once again by the talented Kate Rubin and Carole Klemm respectively, Lavery's *Treasure Island* takes the audience on an edge-of-your-seat search for treasure and its meaning in our life. In 2018 proceeds from the show go to support TLC: Fund for Kids and the Victoria Sexual Assault Centre and a bursary for a law and theatre student in need at UVic.

Stay tuned for our website launch. The 2019 show announcement also will be coming soon. Now, all part of LOST's history.

LOST Sponsors and Friends 2018

LOST extends its deepest appreciation to everyone who has generously supported our 2018 production and giving back to our community.

Founding Sponsor

Stevenson, Luchies,& Legh

Platinum Sponsors

Ghostfinger Productions Ltd

Christopher Mackie

Andrew Pirie

Victoria Bar Association

Gold Sponsors

Andrew Atkins

Albert Berns

Amy Birk

Colleen Cattell QC

Pinder K Cheema QC

Floyd's Diner James Bay

Debbie Harris

Silver Sponsors

The Hon. Evan Blake, British Columbia Provincial Court

BPM Indoor Cycling Inc

Laurie and Jerry Farley

Philomena Hanson

Victoria Arts Marketing

Jones Emery Hargreaves Swan LLP

Andrew Maxwell, Sotheby's

Thrifty Foods

Patrick Trelawney

Dianne Turner QC

Bronze Sponsors

COB's Oak Bay

David Harris and Patricia

Tom Pink

Ruari Maclennan

Sara Ramshaw

LOST Friends

Mike Black, Capital Iron, The Flag Shop Victoria, Village Butcher, Langham Court Theatre and Michelle Buck, Michael Gosselin, Kathy Macovichuk, Dick Newson, Quinn MacTavish, Juhi Shukla, Kirsten Reardon Janis MacNaughton of Stevenson, Luchies, Legh, Caroline of Ghostfinger productions; and Jeremy Kerr, A/Staff Sergeant, BC Sheriff Service, Court Services Branch, Ministry of Attorney General for assisting us with access to the Barrister's Lounge for rehearsals, and Paladin Security for security and access to the Victoria Courthouse

