

LAWYERS ON STAGE THEATRE SOCIETY
presents Hans Christian Andersen's



The Snow Queen

by Stuart Paterson

ADAPTED AND DIRECTED
BY **KATE RUBIN**

DECEMBER 7,8 & 9, 2017
LANGHAM COURT THEATRE
Show Times 8pm
Matinee 2pm, December 9

TICKETS:
Langham Court Theatre
805 Langham Court 250-384-2142
or boxoffice@langhamtheatre.ca

Proceeds go to Victoria Single Parent
Resource Centre and TLC: Fund For Kids

Snow Queen image ©Kelley McMorris

LAWYERS ON STAGE THEATRE SOCIETY

presents

Hans Christian Andersen's

THE SNOW QUEEN

BY STUART PATERSON

ADAPTED AND DIRECTED BY KATE RUBIN



Presented by special arrangement with **The Dramatic Publishing Company**

Director	Kate Rubin
Show Design	Carole Klemm
Producers	Michael Gosselin, Lauren Jerke, Andrew Pirie
Stage Manager	Pirie
Lighting Design	Michael Gosselin
Sound Design	Karrie Wolfe
Costume Co-ordinator	Ivan Elieff
Projection Design	Hana Ruzesky-Bashford
Special Effects	Kevin Stinson

CAST

Kay/Prince	Michael Bendle
King Grin/Soft Bear	Ian Bruce
Snow Queen	Tom Bulmer
Nikko/Ghost	Alex Carroll
Cobweb	Sean Dillman
Gerda	Kate Dutton
Uncle Peck/Muscles/Ghost	Glenn Grande
Scruff/Reindeer	Cailey Harris
Redhead/Ghost	Marcela Lagos
Magician/Tough Bear	Andrew Pirie
Grandmother/Robber woman	Fiona St Claire
Princess Lena/Twitch/Ghost	Katie Webber

SETTING

In our world, in a future not too distant, perhaps just around the corner.

Act 1

From a Dark Place, to Grandma's garden, to the Wild Forest, to King Grin's castle.

Intermission with Silent Auction

Act 2

The Winter Forest, to the Ice Palace, and Home.

Reception in Lounge after show

PRODUCTION TEAM

Production Manager	Susan Leslie
Head Scenic Carpenter	Chris Clarke
Assistant Stage Managers	Alex Carroll, Sara Ramshaw
Makeup Artist	Adrienne Jenkins
Lighting Crew	Karrie Wolfe, Alex Carroll, Michael Gosselin
Lighting Operators	Susan Leslie
Sounds/Projection Operators	Kevin Stinson

Director's Notes

"Go out in the woods, go out. If you don't go out in the woods nothing will ever happen and your life will never begin." - **Clarissa Pinkola Estes (poet, author)** "Things need not have happened to be true. Tales and adventures are the shadow truths that will endure when mere facts are dust and ashes and forgotten." - **Neil Gaiman (author)**

There are many authors that have helped guide both my personal and creative reflection. Clarissa Pinkola Estes, Joseph Campbell, Neil Gaiman and JRR Tolkien to name a few. They spent years studying myth and fairy tales and the modern-day relevance of their writing opened new imaginative worlds for me. I have since thrown away the concept that fairy tales were just for children. Now, we have new stories to relate to such as Harry Potter, Game of Thrones, The Hunger Games, but returning to some of the older stories and retelling them is another choice.

Hans Christian Anderson first published The Snow Queen on Dec 21, 1844. This entrancing fable has been circling the Northern Hemisphere for 173 years. Its origins go much farther back. Some speculate that Anderson modeled the Snow Queen after the Norse goddess Skaði. The 'Snow or Ice Queen' is depicted in books and films and is an archetype in numerous cultures with many interpretations. (e.g. Walt Disney's Frozen) Andersen may have used other characters that came from ancient myths and folklore. Ravens are known to be magical birds in many cultures. The two ravens that assist Gerda also assisted the Norse God Odin and sat on either shoulder, giving him advice.

The other thing of note about the Snow Queen, is that there is a young heroine Gerda, who goes on a quest to save her lifelong friend Kay. She heads out alone into the wild wood. As many of us will attest, we have not tired of seeing women in control of their own destiny. Films, plays and TV series have only begun taking this seriously in the past few years. I love the fact that Gerda and Kay are not lovers but good friends. We rarely see this kind of relationship depicted. Their relationship can represent a new symbolic balance.

Scottish playwright Stuart Paterson's satirical adaption came to mind when we were looking for a play for this production. It was different than anything Lawyers on Stage had done before so I appreciate their willingness to stage it. It has been an enjoyable journey, with cast and crew all contributing to the satirical commentary, theatricality and deeper underlying subtext. We hope it warms your wintry day!

A Message from Lawyers On Stage Theatre Society (LOST)

LOST is back! After a few years' hiatus, LOST returns with its 2017 production of The Snow Queen, by Stuart Paterson, beautifully Adapted and Directed by Kate Rubin. Many thanks to Langham Court Theatre for allowing us lawyers into their building. Please consider a Langham membership and / or subscribing to their wonderful season of theatre.

We hope you enjoy the show. The original tale spun by Hans Christian Andersen 170 years ago has surprisingly timely and touching messages for us all. Hope to see you next year. 2018 Show announcement is coming soon.

Happy Holidays from the LOST Board

| **Kylyn Athey** | **Andrew Atkins** | **Albert Berns** | **Colleen Cattell QC** |
| **Phil Duchene** | **Debbie Harris** | **Lauren Jerke** | **Susan Leslie** | **Andrew Pirie** |

About the Playwright

Stuart Paterson has written numerous adaptations of fairy tales, including *The Snow Queen*, for the Scottish Youth Theatre, more recently *In Traction* (later televised by BBC). His work for television includes *The Old Course* and the film *Workhorses*, which won the BBC Pharic McLaren Award for best script and best production.

His version of *The Seagull* was broadcast by BBC Radio 3. His screenplay *Somebody's Wee Nobody* won the Gold Award at the Chicago International Film Festival. Current film projects include original screenplays *The Pretender*, *Whisky Mac*, *Under the Same Moon* and screen adaptations of *The Kelpie's Pearls* by Mollie Hunter and *Fergus Lamont* by Robin Jenkins. He is currently working with Scots and Scandinavian producers on a screen adaptation of *Doctor Glas* by Hjalmar Soderberg, and on an original screenplay *Body and Soul*.

Production Biographies

Kate Rubin | Director



Kate has been a theatre artist and educator in Victoria for 30 years. Her work in the community has been diverse and extensive. She ran her own studio Kate Rubin Theatre & Drama Studio for 23 years and has worked as an independent artist, with many theatre companies and organizations including The Belfry Theatre, Intrepid Theatre, Puente Theatre and Giggling Iguana Productions. This past summer she directed *Macbeth* for the Greater Victoria Shakespeare Festival. She is also known for her 13 year working relationship with William Head on Stage (WHoS) at William Head Institution, directing, performing and facilitating workshops for them. She is honoured to have been asked to direct this year's production for *LOST* and has had a wonderful time working creatively with such a dedicated, hard working and talented cast and crew.

Carole Klemm | Show Design



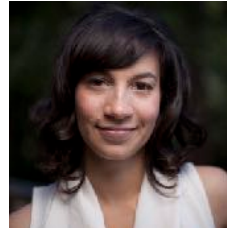
Carole is a Victoria based designer and scenic artist whose recent work includes *MacBeth* and *Love's Labours Lost* for Victoria Shakespeare Festival, *Taking Off* for The Belfry Theatre and *The Birds and the Bees* for Prairie Theatre Exchange, Winnipeg. She has designed and painted for the Royal Manitoba Theatre Centre, the Belfry Theatre, Theatre SKAM, William Head on Stage, Chemainus Theatre Festival, Blue Bridge Theatre, Kaleidoscope Theatre, Western Canada STheatre Company, Studio 58 and others.

Michael Gosselin | Producer/Stage Manager



Michael has been working in the Victoria theatre scene for the last five years, primarily at Langham Court Theatre. He has also Stage Managed *River of Time* (Uno Fest), and *Shirley Valentine* (Dragon Monkey Productions). He thanks the cast and crew for their time and effort on this show.

Lauren Jerke | Producer



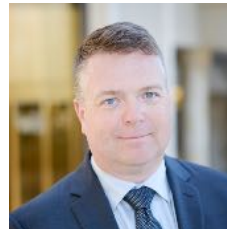
Lauren is a theatre practitioner and PhD candidate in applied theatre at the University of Victoria. Her current interest is in using theatre for educational purposes and to address social justice issues with members of the legal profession and public administrators.

Karrie Wolfe | Lighting Design



Karrie is thrilled to light another LOST show and on her "home" stage, no less! Kudos to Kate R for her rare combo of vision and practicality, and to the amazing production team and cast. Selected designs: *Rocky Horror*, *Kindergarten* (LOST), *Pirates* (G&S Society), *One Man Two Guvnors*, *Taking Leave* (Langham). A lawyer by day, Karrie has deep roots in community theatre.

Ivan Elieff | Sound Design



Ivan graduated from St. Francis Xavier University with a major in jazz piano, and from the UVic faculty of law. He practices at the Ministry of Attorney General, and is also a reservist in the Canadian Armed Forces with the Office of the Judge Advocate General. Outside of law, he is a busy session musician, sideman, and family man.

Hana Ruzesky-Bashford | Costume Co-ordinator



Hana is a recent graduate of the Phoenix Theatre program at UVic. Recent costume credits include: costume design for *The Inspector* (Phoenix), *Project Mercury* (Vino Bueno) and *Dog Sh*t* (SATCo), assistant costume design for *Summer and Smoke* (Phoenix) and wardrobe management on *Wild Honey* (Phoenix) and the *Threepenny Opera* (Phoenix). Enjoy the show!

Kevin Stinson | Projection Design



Kevin is enjoying the challenge of designing the projections and projection system for *The Snow Queen*. His previous projection designs at Langham Court include *Rosencrantz & Guildenstern Are Dead*, *The Penelopiad*, and *The 39 Steps*. Other recent designs were for Theatre Inconnu's productions of *Age of Arousal*, and *If We Were Birds*. He has appeared as an actor and designed sound for many plays at Langham Court and elsewhere, and is currently President of the Langham board.

Cast Biographies

Kate Dutton | Gerda



After taking a long hiatus from theatre to pursue a career in law, Kate is excited to be back on stage in LOST's production of *The Snow Queen*. She is thrilled to blend her love of theatre and the law in the spirit of community engagement. By day, Kate is a Crown Counsel. By night, she is still a Crown Counsel -- it's just dark outside.

Michael Bendle | Kay/Prince



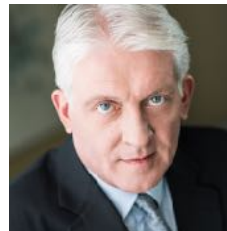
Michael is a lawyer in town with Woodward and Company, a firm specialized in assisting Indigenous clients. Aside from the odd bit of high school theatre, this production is Michael's first step back onto the community theatre stage since having performed with the Cowichan Musical Society, alongside his mother, nearly 20 years ago.

Sean Dillman | Cobweb



Sean is excited to be back onstage with Langham Court Theatre after last appearing as George Hastings in *She Stoops to Conquer*. His last role was Patrick Simmons in *A Murder Is Announced* at St. Luke's Players. Outside of the theatre, Sean is a lawyer with Dinning Hunter Jackson Law.

Tom Bulmer | Snow Queen



Tom has been on the boards since the age of 9 and has a long list of credits in theatre, film and television. Alas however, he cannot yet quit his day job which is practicing primarily criminal and family law. Passionate that the arts save lives, he is a strong advocate promoting the arts in children. A member of the Victoria Shriners Clown Unit, he is also proud to be a Fire Fighter/Medical First Responder with the East Sooke Volunteer Fire Department.

Andrew Pirie | Magician/Bear Tough



Andrew is thrilled to be working with such a talented production team and cast from the legal community. Favourite onstage appearances include *The Mating Dance of the Werewolf* (Theatre Inconnu), *Escape from Happiness* (Langham Court Theatre), *Amadeus* (Kaleidoscope Theatre) and several shows with LOST including *Twelve Angry Jurors*. Off stage Andrew is Professor Emeritus in the Faculty of Law at UVic. Andrew dedicates his performance to his mom Helen Pirie, who inspired him always.

Glenn Grande | Uncle Peck/Muscles/Ghost



Back-to-back UBC Guile Debate champion Glenn hails from Victoria and is honoured to help bring some levity to the court of public theatre for the holiday season. When not performing existential gymnastics in his natural habitat, Glenn may be spotted executing the directorship of Fair Mining Collaborative. He dedicates his performances to his daughter, Isabella, beneath whose mighty talents he can only aspire in awe.

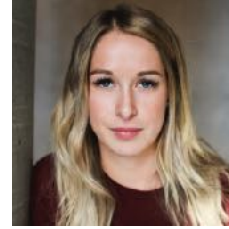
Cast Biographies

Fiona St. Clair | Grandma/Robber Woman



Fiona is a LOST veteran, having acted in *Tom Jones*, *The Man Who Came to Dinner*, *Romulus the King*, and *All I Really Need to Know I Learned in Kindergarten*. After practising law for 36 years, she retired from the Legal Services Branch of the Ministry of Justice in 2016. She was enticed into returning to LOST when told they needed an actor with “gravitas,” but she suspects now they just wanted someone old.

Cailey Harris | Scruff/Reindeer



Cailey is extremely excited to be appearing in LOST's production of *The Snow Queen*. She has performed in LOST in its early days (Working 2009) and is glad to be back on stage with the legal professionals of Victoria. Cailey will be finishing up her Masters in Applied Theatre at UVic in the new year and hopes to continue to use theatre for social change and development around the world.

Katie Webber | Princess Lena/Twitch/Ghost



Katie practises constitutional and administrative law with the Ministry of Attorney General. She cut her acting teeth as a member of McGill Law's “Actus Reus” troupe, with roles in *The Mousetrap*, *7 Stories*, and *Goodnight Desdemona, Goodmorning Juliet*. Having since redirected her flair for drama to the courtrooms of British Columbia, Katie is once again eager to appear before a larger panel. She hopes *Snow Queen* audience members will enjoy *audi alteram partem*-ing.

Ian Bruce | King Grin/Soft Bear



Ian has appeared with Peninsula Players in Sidney and Clayoquot Community Theatre in Tofino and is pleased to fulfill his aspiration of treading the boards at the historic Langham Court Theatre. He finds his King Grin character fun to rehearse and looks forward to making mayhem on the stage. Ian is a professional biologist and founder of Peninsula Streams Society.

Marcela Lagos | Redhead



While Marcela joined the Ministry of Public Safety and Solicitor General in 2016, participating in LOST has given her a whole new perspective on lawyers. It has also taken her acting skills to a new level. After elementary school roles as a Christmas angel, a tree, and later a chorus member in the high school musical, *The Snow Queen* catapults her into her first speaking role: Fifty-two lines in total!

Alex Carroll | Niko/Ghost



Alex is a first timer with LOST, but is a veteran at Langham. He has worked both on and off stage in a variety of shows including *One Man, Two Guvs*, *Dr. Jekyll and Mr. Hyde* and *Edwin Droad*. Alex is pleased to work with the resurrection of LOST and hopes it's a lasting partnership.

LOST Sponsors 2017 The Snow Queen

Founding 2017 sponsor

- Stevenson, Luchies,& Legh •

Platinum Sponsors

- Anonymous • Andrew Pirie •

Gold Sponsors

- Colleen Cattell & Andrew Atkins • Debbie Harris • Schibli::Stedman::King Chartered Professional Accountants •

Silver Sponsors

- The Hon. Evan Blake, British Columbia Provincial Court • Andrew Maxwell, Sotheby's • Ann Davenport and Jeremy Phillips • BPM Indoor Cycling Inc. • Phil Duchene • Dr. Cheryl Handley • The Hon. Rodney A. Jerke, Court of Queen's Bench, Alberta • Jones Emery Hargreaves Swan LLP • Lonsdale, Nozari & Voldeng, Wealth Advisors RBC Wealth Management • Thrifty Foods • Patrick Trelawney • Oak Bay Bicycles •

Bronze Sponsors

- COB's Oak Bay • Trish and Monique Duran • Duttons & Co. Real Estate Ltd. • The Frame Up • Ole Schmidt • VI Fitness Centre for Women, Oak Bay •

LOST Friends

-
- Chamberlain Walk Hair Design • DavidsTea • Hoyne Brewing Company • Island Hair Cutting Co. • Ivy's Book Shop • Kissako Sushi • Lazy Susan's • Oasis Nails and Spa • Nicholas Randall • Phillips Brewing and Malting Co. • Oak Bay Flower Shop • The Penny Farthing Public House • Red Barn Market Oak Bay • Starbucks • Ten Fifteen Beauty Bar • Village Butcher • Vis a Vis •

Acknowledgments and Many Thanks:

- The Belfry Theatre • Michelle Buck • Amy Birk • Andrew Blanchard • Neil Carfra • Jonathan Carpenter of Veilwood Music • Roger Carr • Ghostfinger Productions • Glenlyon Norfolk School • Gemma Goulder • Clayton Jevne • Katrina Kadoski • Langham Board • Janis La Couvee • Janis MacNaughton • Colleen Maguire • Dick Newson • Pacific Opera Victoria • Sherriff's services • Dr. Kirsten Sadeghi Yekta • Juhi Shukla • Theatre Inconnu •

