



Lawyers on Stage Theatre Society
presents

DRACULA:

A RADIO PLAY

Directed by
Andrew Pirie and
Sara Ramshaw
with
Phil Duchene

by Orson Welles
from the novel by Bram Stoker

Langham Court Theatre

December 15, 16, 17 at 8 pm
December 18 at 2 pm

Tickets on sale October 21 at <http://www.langhamtheatre.ca>

Adult \$30, Senior \$25, Student \$15 (*plus service fee*)

Proceeds go to support
Together Against Poverty Society (TAPS)
Need 2: Suicide Prevention, Education & Support

For more information, contact info@lawversonstage.com or go to www.lawversonstage.com

LAWYERS ON STAGE THEATRE SOCIETY

presents

DRACULA: A RADIO PLAY

BY ORSON WELLES

BASED ON THE NOVEL BY BRAM STOKER

Directors	Andrew Pirie & Sara Ramshaw
Producer	Andrew Pirie
Foley/Artistic Director	Phil Duchene
Lighting Design & Show Caller	Karrie Wolfe
Sound Design	Phil Duchene
Costume Coordinator	IAF
Commercial Lyrics	Harried Designs FCS

THE LOST RADIO PERFORMERS

(In order of appearance)

Ruari McLennan	Radio Director / SFX/Foley
Phil Duchene	SFX/Foley / News Vendor
Irene McGee	SFX/Foley
Andrew Pirie	Announcer
Benson Cowan	Dr Arthur Seward
Benjamin Peterson	RM Renfield / Coach Driver / Demeter Mate
Marina Goodwin	Nurse Ratschid / Demeter Captain / Czarina Catrina Captain / Hildesheim / Old Person
Stuart Wright	Jonathon Harker
Susan Ellis	Innkeeper / Dracula's Bride 1 / Hand 2
Raya MacKenzie	Dracula's Driver / Dracula's Bride 2 / Voice (offstage)
Sara Ramshaw	Count Dracula
Taryn Marwick	Dracula's Bride 3 / Hand 1 / Another Voice (offstage)
Gabrielle Doiron	Lucy Westenra
Rebecca Johnson	Dr Van Helsing
Selina Wall	Mina Harker

Also Featuring

Foley Artists	Phil Duchene, Ruari McLennan & Irene McGee (with Rene Kimmitt)
Keyboard	Alex Fyfe
Mellow Dees	Jay Duncan, Lisa Jackson, Caroline Jane, Janet Lawson, Ted Wallbridge, & Lisa Willott
Lighting Board Operator	Jen Illingworth
Soundboard Operator	Amanda Heffelfinger
Vampirologist	Dr Peter Gözl, University of Victoria

A Message from Lawyers on Stage Theatre Society (LOST)

The broadcast tonight is not just about enjoying a great story; it is about fundraising to support two local charities:



Together Against Poverty Society (TAPS) is one of the largest providers of free, face-to-face legal advocacy for people with income assistance, disability benefits, employment standards, and tenancy issues. TAPS also provides legal education and training, helping over 7,000 people in Victoria each year.

For more information, go to <https://www.tapsbc.ca>.



Need2: Suicide Prevention, Education and Support works every day to prevent deaths by suicide through their community programs and online presence. They provide accessible emotional and crisis support by engaging the community and advancing the dialogue.

For more information, go to <https://need2.ca>.

Your presence here tonight, along with your generosity, will make a real difference in people's lives.

Thank you!

Happy Holidays from the LOST Board

Albert Berns | Phil Duchene | Debbie Harris | Marina Goodwin | Irene McGee |
Ruari McLennan | Andrew Pirie | Sara Ramshaw | Selina Wall | Karrie Wolfe

SETTING

The present day at Langham Court Theatre.

Story Settings: Transylvania in the Carpathian Mountains; Eastern Europe; Whitby Harbor; Piccadilly Street in London, England; Purfleet Sanitarium; and Carfax Abbey.

Story Time: Late 1800s.

Running Time: 120 mins (with Intermission).

Directors' Notes

We hope you enjoy experiencing not only Bram Stoker's iconic Gothic horror story but also the brilliance of Orson Welles' adaptation. While we have added some new scenes to his 58-minute radio version, Welles captures the exciting epistolary nature of the novel, a story told through documents, memoranda, journals and the like. Welles' version also used sound and music extensively in 1938 to immerse his radio audience in the story. We hope our Foley artists, musicians and sound design team also convey the richness in storytelling that comes by combining the actors' voices with the real sounds of the story unfolding. As a bonus, Karrie Wolfe's lighting adds more magic to it all.

We also hope the story touches on some present day issues for you. LOST strives to present plays that are both entertaining and thought-provoking. When *Dracula*, was published in 1897, there was a great fear in Victorian England of immigration from Eastern Europe of people who were different, who spoke different, dressed different, looked different. Hence, Count Dracula, with his unquenchable desire to change English society, was the horrific manifestation of that fear. The novel also was published as the New Woman was emerging wanting equal rights. Sexual mores were being challenged. The women in *Dracula*, indeed *Dracula* itself, all can be seen as manifestations of those changes. These poignant issues still require our attention and efforts today. Fear is not the answer. Enjoy the broadcast!

About the Playwright

Orson Welles was an American actor, director, producer, and screenwriter who is remembered for his innovative work in film, radio, and theatre. He is considered to be among the greatest and most influential filmmakers of all time with films such as *Citizen Kane* (1941). For all of Welles' filmic artistry, though, he was equally accomplished in radio and theater. At 23 years of age, Welles led the Mercury Theatre cast of *Dracula* on the night of July 11, 1938. According to Colin Fleming, this radio drama was "one of the most horrific and transcendent presentations of sounds [he'd] ever experienced". After a breathless hour of taut storytelling, Welles assured the audience that the program was only fiction and that they could turn off the radio and go to bed. But then, slipping back into his Count Dracula accent, he added, "Remember ... there are wolves ... there are vampires ... such things do exist." Welles' mixture of artistic showmanship and direct address capped a stunningly fresh way of engaging a radio audience and launched a new era of excellence in the medium.

Production Biographies



Andrew Pirie | Director

Andrew is Professor Emeritus at the University of Victoria Faculty of Law (UVic Law) and President of Lawyers on Stage Theatre Society (LOST). Andrew is thrilled and awed to be co-directing LOST's second radio play (after *Frankenstein*) with the super-talented Sara Ramshaw and with the artistic and Foley direction of the incredible Phil Duchene. It has been a joy for Andrew to collaborate with hard working and talented actors, artists, and singers to bring Orson Welles' radio adaptation of Bram Stoker's *Dracula* to the stage with a few modern updates to help those in need in our community. Andrew's previous LOST productions include *Frankenstein*, *Seven Keys to Baldpate*, *Treasure Island*, and *The Snow Queen*. Recent stage appearances include detectives with attitude in *The Mating Dance of the Werewolf* (Theatre Inconnu) and *Escape from Happiness* (Langham Court Theatre).



Sara Ramshaw | Director

Sara is Professor of Law at UVic and sits on the LOST Board of Directors. This is her second time directing a LOST performance. She is so grateful to Andrew Pirie and Phil Duchene for their assistance and guidance on this production, and to the amazing cast and production crew. Sara is also playing "Dracula" in this production. Her previous experience with LOST includes *Frankenstein: The Radio Play*, *Seven Keys to Baldpate*, *Treasure Island*, and *The Snow Queen*. She has also performed with Canada Ice Dance Theatre, the Lennox & Addington Theatre Guild, Hamilton Urban Theatre, and at the Staircase Theatre in Hamilton, Ontario.



Phil Duchene | Artistic & Foley Director

Phil is a life-long teacher, LOST Board member and a UVic Drama instructor in the Teacher Education Program. He is very happily returning to Langham Court Theatre once again as the Artistic and SFX/Foley Director and a SFX/Foley artist for Orson Welles' *Dracula: A Radio Play*. He played "DeLacey"/"Priest" and SFX/Foley in LOST's 2021 *Frankenstein: The Radio Play*, 2019 *Seven Keys to Baldpate* ("Hal Bentley"), and 2018 *Treasure Island* ("Bill Bones"/"Lucky Micky").

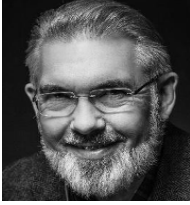


Karrie Wolfe | Lighting Design & Show Caller

Karrie is a barrister with the Legal Services Branch at the Ministry of Attorney General, but regularly dreams about trading court robes and caselaw for lights and a ladder. Karrie is pleased to light the stage for LOST's production of *Dracula*, following on the fun of *Frankenstein* last year. In addition to *Frankenstein*, previous LOST lighting designs include *The Snow Queen*, *Treasure Island*, and *Seven Keys to Baldpate*. Pre-COVID, Karrie frequently designed lights for Langham, including for *Putnam County Spelling Bee*, *Urinetown*, and *August: Osage County*. Karrie serves on the Boards of LOST and Intrepid Theatre. She thanks her family for sharing her, and as always, dedicates this show to the memory of her friend Phil.

Cast Biographies

(In order of appearance)



**Ruari McLennan | Radio Director,
SFX/Foley**

Ruari is happy to make lots of noise again with the SFX/Foley team, after his first try at sound effects in *Frankenstein: The Radio Play*. Ruari has been an actor in LOST productions off and on since the early 2000s. He was an in-house lawyer at ICBC until retiring from there in 2021, and now practices at Sitka Law Group.



Irene McGee | SFX/Foley

Irene practices family law with Davison & Co. After playing “Silent Sue” in *Treasure Island*, they are excited to make a racket performing SFX/Foley in their second LOST production. As a child, Irene was painfully shy in person but miraculously comfortable on stage. Acting in community productions and hanging with the theatre kids, Irene left school with enough off-stage confidence to pursue other interests. Now she has found a theatre community again, she is sticking around as a member of the LOST Board of Directors.



Benson Cowan | Dr Arthur Seward

Benson is a lawyer with the Ministry of the Attorney General. He recently moved to Victoria from Nunavut. This is his first time performing with LOST. His only previous stage credit was playing a rat in his Grade 6 production of the *Pied Piper of Hamelin*.



**Benjamin Peterson | RM Renfield,
Coach Driver, Demeter Mate**

Benjamin is a lawyer with Wilson Marshall Law Corporation and is thrilled to receive his LOST hat trick this year, having appeared in the past productions of *Seven Keys to Baldpate* and *Frankenstein: The Radio Play*. Prior to his work with LOST, Benjamin appeared on stage with fellow lawyers in the St. Catherines, Ontario production of *The Caine Mutiny Court-Martial*, as well as various productions both in high school and university. He is delighted to be working again with the cast and crew, and especially enjoys seeing the Foley artists work their magic. In an effort to take his role as Renfield seriously, Benjamin attempted to add insects to his diet but just couldn't stomach it!

Cast Biographies

(In order of appearance, continued)



**Marina Goodwin | Nurse Ratschid,
Demeter Captain, Czarina Catrina
Captain, Hildesheim, Old Person**

Marina is a litigator with the Legal Services Branch at the Ministry of Attorney General. This is her second LOST performance, after playing a *Treasure Island* pirate in 2019. She is looking forward to being back on stage, and to getting to watch the SFX/Foley artists do amazing things with sound.



Stuart Wright | Jonathon Harker

No stranger to strange castles, Stuart works as a legal coach and family lawyer. This is his second LOST production following *Seven Keys to Baldpate*, and other recent projects include *The Curious Incident of the Dog in the Night-Time*, *As You Like It*, *Much Ado About Nothing*, *Troilus and Cressida*, and *The Woman in Black*.



**Susan Ellis | Innkeeper, Dracula's
Bride 1, Hand 2**

Susan is thrilled to return to LOST after appearing last year as "Baroness Frankenstein" in *Frankenstein: The Radio Play*. She is retired from the Yukon to Victoria and is a life-long theatre enthusiast. Her happiest recent roles include "Mrs. Brady" in *Inherit the Wind*, "Dotty" in *Noises Off*, "Gonzala" in *The Tempest* and a mad woman and monkey in *Peer Gynt*. Susan was a practicing lawyer, policy specialist, legislation developer and academic who once taught Feminist Theory of Law at UBC (Allard) Law School, and Law and Literature at Herstmonceux Castle in East Sussex, England (Queen's University International Study Centre).



**Raya MacKenzie | Dracula's Driver,
Dracula's Bride 2, Voice (offstage)**

Raya is a solicitor practicing at Jawl Bundon LLP in the areas of Wills and Estates, Real Estate, and Corporate. Raya loved Theatre in High School and has always hoped to get back on the stage one day. She is so excited to be part of the LOST cast this year! When not in the office or at LOST rehearsals, Raya enjoys spending time with her family and friends ... perhaps some of them are in the audience tonight? Enjoy the show!

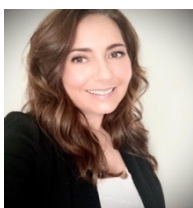
Cast Biographies

(In order of appearance, continued)



**Taryn Marwick | Dracula's Bride 3,
Hand 1, Another Voice (offstage)**

This is Taryn's first performance with LOST. Taryn has been a part of various other theater productions in the past such as: *Alice in Wonderland*, *The Wizard of Oz*, *The Pajama Game* and *Nice Work if You Can Get it*. Having had most of her on stage experience be focused in musical theatre, Taryn is excited to dive into the world of radio plays.



Gabrielle Doiron | Lucy Westenra

This is Gabrielle's second time performing with LOST, having played "Beatrice Rhodes" in *Seven Keys to Baldpate*. She has experience with performing on stage in various theater productions during high school (*Nutcracker*, *Leader of the Pack*) and indie film shorts with Of Dubious Origin Productions. After a long hiatus from the stage, Gabrielle has found her way back to her first love ... acting! She currently is working for the University of Victoria.



Rebecca Johnson | Dr Van Helsing

Rebecca is Professor of Law at UVic, returning to the stage after a nearly 40-year hiatus (last appearing at the University of Calgary in the Chorus of Euripides' *The Trojan Women*). Nourished from childhood on the mother's milk of B grade horror movies, she is thrilled to be exercising her vocal cords in this production of *Dracula*. While she had always imagined herself more in the role of Vampirella, she finds there is something satisfying in taking up pressing questions of socio-legal transformation through the role of vampire hunter, rather than through the blood-suckers themselves.



Selina Wall | Mina Harker

Selina is a lawyer at Stevenson Luchies & Legh, obtaining her JD degree from UVic Law in the Spring 2021. This is her third LOST production, having taken on the roles of "Elizabeth Frankenstein" in *Frankenstein: The Radio Play* (2021), and "Police Officer 1" and Foley/SFX Artist in *Seven Keys to Baldpate* (2019).

Musicians Biographies



Alex Fyfe | Keyboard

Alex had so much fun playing the keyboard in last year's LOST production of *Frankenstein: The Radio Play*, that he decided to do it again in this year's production of *Dracula: A Radio Play!* He has honed his musical chops in many rock bands over the years and is looking forward to the Victoria Bar Association's Battle of the Bar Bands to be held in March 2023. Alex was a legislation counsel working for the Government of BC until he retired in 2020.



From L to R: Caroline Jane, Lisa Jackson, Janet Lawson, Ted Wallbridge, Lisa Willott, and Jay Duncan

Mellow Dees

**Jay
Duncan**

Jay has been an active member of a local community choir called "The Choir" for over 8 years. Her love for anything musical led her to say "Yes" again to being a part of this amazing and talented LOST crew. This is Jay's second time performing commercials for a LOST production and she is proud to be able to support such worthy recipients of this important fundraiser.

**Lisa
Jackson**

Lisa has been regularly involved in the arts community through performing at work (retirement community), open mic gigs and singing with "The Choir" (The Choirs YYJ). She is excited to join her fellow singers and a talented group of lawyers for these performances for two important causes.

**Caroline
Jane**

Caroline is a founding partner of Design Creative Coast and an award-winning graphic designer, photographer, artist, and writer. She has a deep-rooted passion for all things beautiful and finds sheer pleasure in creating designs that are physically appealing and emotionally stimulating. She also loves to sing!

**Janet
Lawson**

Janet loves singing – from mountain tops, in choir, while swimming, on horseback, really, at the drop of any hat at all – and now, singing for you here with her pals on LOST Radio! She is delighted that this opportunity came her way.

**Ted
Wallbridge**

Ted has enjoyed singing all his life and has been a member of the local community choir, "The Choir", for the past 7+ years. A fan of a wide variety of the arts, Ted is thrilled to be joining his fellow singers and the talented LOST performers and crew once again to help raise funds for our community.

**Lisa
Willott**

Lisa (Willott) is a local foods enthusiast whether it's growing it, advocating and supporting growers, or eating it! She's been singing with "The Choir" in Victoria for 7 years. She's happy to be involved with LOST especially in the fundraising efforts for such great organizations.



Lawyers on Stage Theatre Society (LOST) says ...

*Thank you all so much for supporting the show, including you, our live audience!
And a deep thank you to:*

Our Broadcast Sponsors

- Andrew Maxwell, Sotheby's International Realty Canada •
- Ariel Adair Health and Harmony Chiropractic •
 - Corvus Law •
 - Floyd's Diner •
- Ghostfinger Productions •
 - Jones Emery LLP •
- Lawyers on Stage Theatre Society (LOST) •
 - Sitka Law Group •
- Lotus Pond Vegetarian Restaurant •
 - Stevenson, Luchies, & Legh •

Our Promotion Partners

- Canadian Bar Association BC Branch  •
- Victoria Bar Association  •

Friends of LOST

(in alphabetical order)

- Anonymous • Angelina Atkinson •
- Anna Bjelde of Royal LePage Coast Capital Realty •
 - Richard Butler •
 - Gillian Calder •
- Charelli's Cheese Shop & Delicatessen •
 - Come Home, The Durans •
 - Craigdarroch Castle •
 - Duchess Cocktails •
 - Malene Foyd •
- Natasha Gordon • Mayhanna Haslam •
 - David Hay • Sam Hulme •
 - Il Terrazzo Ristorante •
- Michael Kuss and the Langham Builders •
- Langham Court Theatre Costume Loft •
 - League and Williams Law •
 - Ministry of Attorney General •
 - North Woven Broom Company •
- Scott MacKinnon • Bruce Murray • Dick Newson •
 - Paladin Security •
 - Holly Pattison •
 - Phoenix Theatre •
 - Colleen Piercy •
- Red Barn Market Oak Bay •
- Smile Esthetics • Dr Chris Souliotis •
 - Sherry Tonkin •
- University of Victoria Faculty of Law •
 - Rick Van Krugel •
- Village Butcher Oak Bay • Winslow Properties Ltd. •

ENJOY THE SHOW!!!!

History of LOST

The history of Lawyers on Stage Theatre (LOST) is best told when LOST friends and colleagues assemble for an evening of theatre and community, perhaps at LOST's annual theatrical fundraiser. For it is through these connections between law, theatre, and the community that LOST was found, so to speak!

In 1996, a group of 11 lawyers including Diane Turner, Michael Hutchison, Steve Kelleher, Rolfe Horne, Judge Michael Hubbard, Andrew Pirie, and Don Lawton offered to help raise funds for a struggling theatre company in Victoria. They bravely went on stage and played the jury deliberating about the life or death of a young immigrant man accused of first-degree murder in *Twelve Angry Men*. This was the first fundraiser.

Then, with a name – an ambiguous acronym LOST – and a stylish logo, Lawyers on Stage Theatre regaled, surprised, disappointed, wowed, and provoked audiences for over ten years. Remember back, if you were there, to the LOST alumni who played these shows: *Breaker Morant* (1997), *Tom Jones* (1999), *Romulus the Great* (2001), *Escape from the 70s Dinner Theatre* (2002), *Murder on the Nile* (2003), *The Man Who Came to Dinner* (2004), *Everything I Really Need to Know, I Learned in Kindergarten* (2005), *I Love You, You're Perfect, Now Change!* (2006), *Scrambled Feet* (2007,) *Working* (2008), and more.

LOST then went cocoon-like for a few years, although the core of the LOST alumni and the concept of lawyers on stage giving back to their community did not disappear.

In 2017, with the support of Stephenson, Luchies & Legh and the Victoria Bar Association, as well as the hard work of a lot of people, LOST went from a dispersed collection of theatre aficionados in law to a registered Society: Lawyers on Stage Theatre Society, complete with a Board of Directors made up of both dedicated theatre and legal professionals to emphasize the collaborative nature of the enterprise.

In December 2017, LOST, in its new form, presented *The Snow Queen* at Langham Court Theatre. Directed by Kate Rubin and designed by Carole Klemm, Stuart Patterson's adaptation of Hans Christian Andersen's 1844 tale was well received and raised much needed resources for the Victoria Single Parent Resource Centre and TLC: Funds for Kids. And even though a fairy tale, the play had some remarkably timely messages about courage and standing up to an existential threat to the world, perseverance, friendship, corruption, and not unimportantly, the fragility of the environment.

LOST returned in 2018 with Bryony Lavery's feminist *Treasure Island*, based on the adventure novel by Robert Louis Stevenson. Directed and designed once again by the talented Kate Rubin and Carole Klemm respectively, Lavery's *Treasure Island* took the audience on an edge-of-your-seat search for treasure and its meaning in our lives. The play also made the statement that "adventure is not just for boys!" Proceeds from the show went to support TLC: Fund for Kids and the Victoria Sexual Assault Centre and a bursary for a law and theatre student in need at UVic.

In 2019, LOST staged the George M Cohan classic, *Seven Keys to Baldpate*. This little-known melodramatic farce turned out to be a beautiful hit! Cohan's 106-year-old clever satire on the mystery thriller aged well, particularly the bit about political corruption! Kate Rubin and her team delivered their 3rd and best production, which was a wonderful parting gift. Proceeds from this show went to Need 2: Suicide Prevention Education and Support and the Victoria Foundry.

LOST returned in 2021 after a COVID break with Philp Grecian's *Frankenstein: The Radio Play* co-directed by Andrew Pirie and Sara Ramshaw with Foley Director Phil Duchene. With modern day messages about tolerance and discrimination, the radio play wowed audiences and produced record revenues for the LOST charities: Need 2 and the Victoria Sexual Assault Centre.

In 2022, LOST returns with another big story in staged radio play format: Bram Stoker's *Dracula*, adapted for radio by the legendary Orson Welles with proceeds going to Together Against Poverty Society (TAPS) and Need2.

The history of LOST will continue to evolve. If you would like to get involved, have a look at how you can participate and/or support LOST at www.lawyersonstage.com.



Photo credit: Sara Ramshaw (Salzburg Courthouse, Austria)

Lawyers on Stage Theatre Society (LOST)

***Local legal professionals:
on stage, giving back to the community***

Watch for our 2023 Production Announcement. Coming soon!

For more information, or to get involved, contact info@lawyersonstage.com
or go to www.lawyersonstage.com